

Diagnostic Classification of Prosthodontic Patients

Diagnostic Code
+Treatment Code
Outcome Data

**Completely
Dentate**

Class I



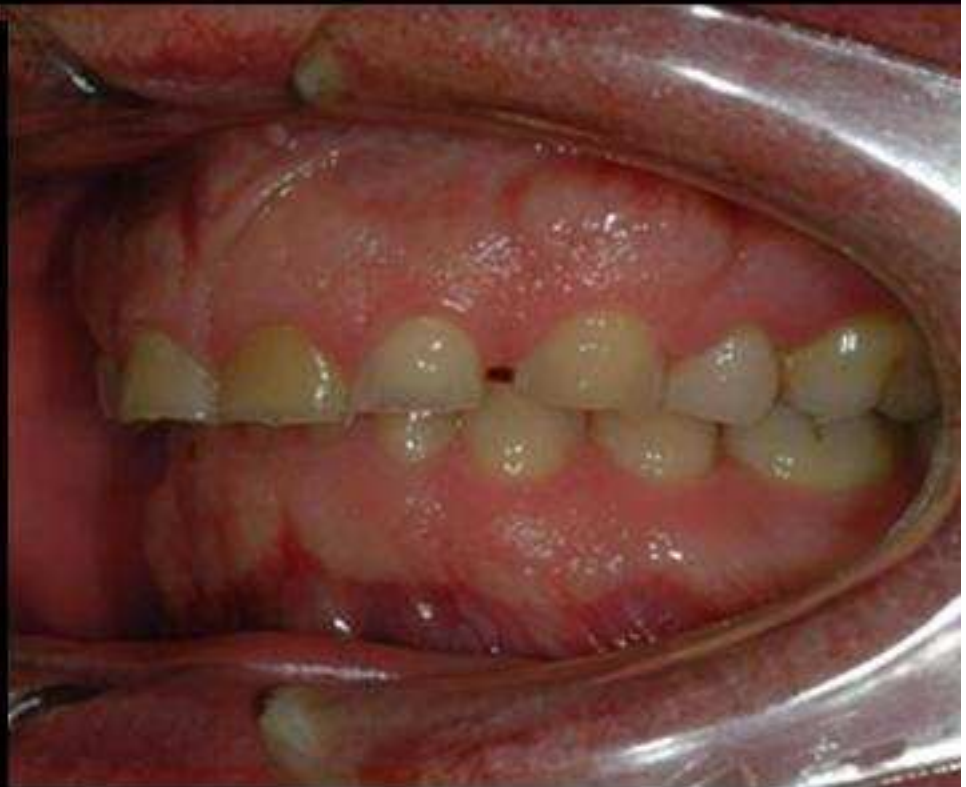
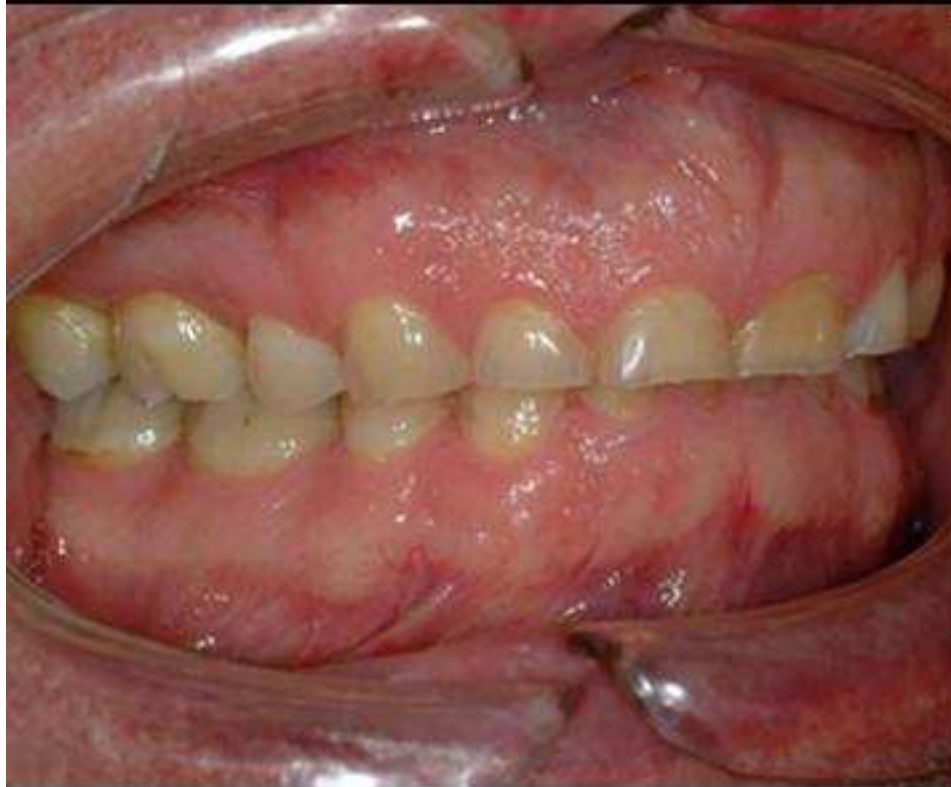
Class IV



Completely Dentate

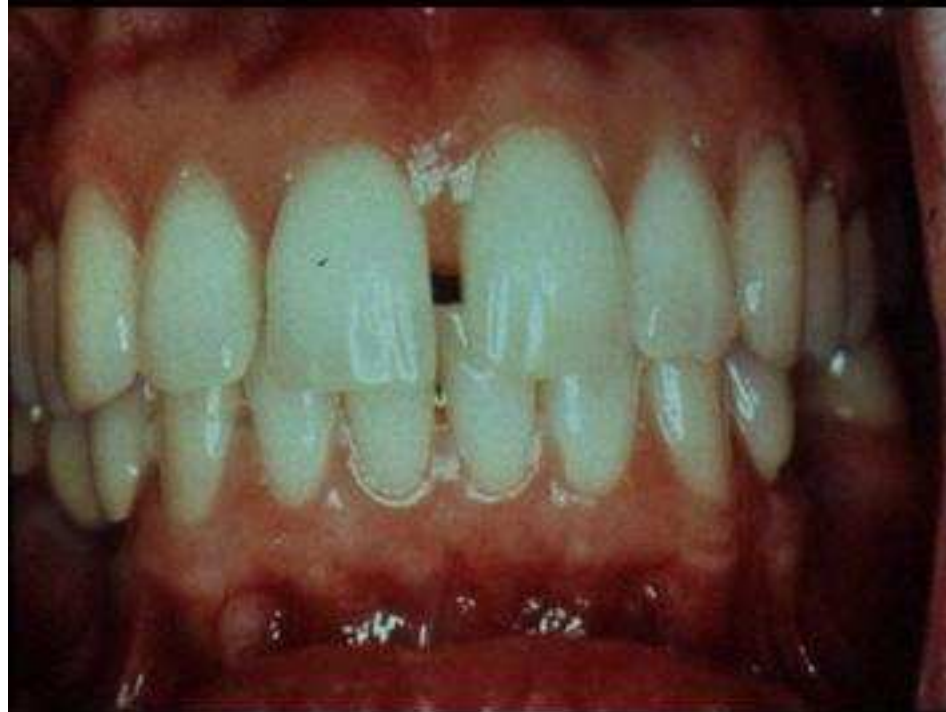
Class IV

Class IV

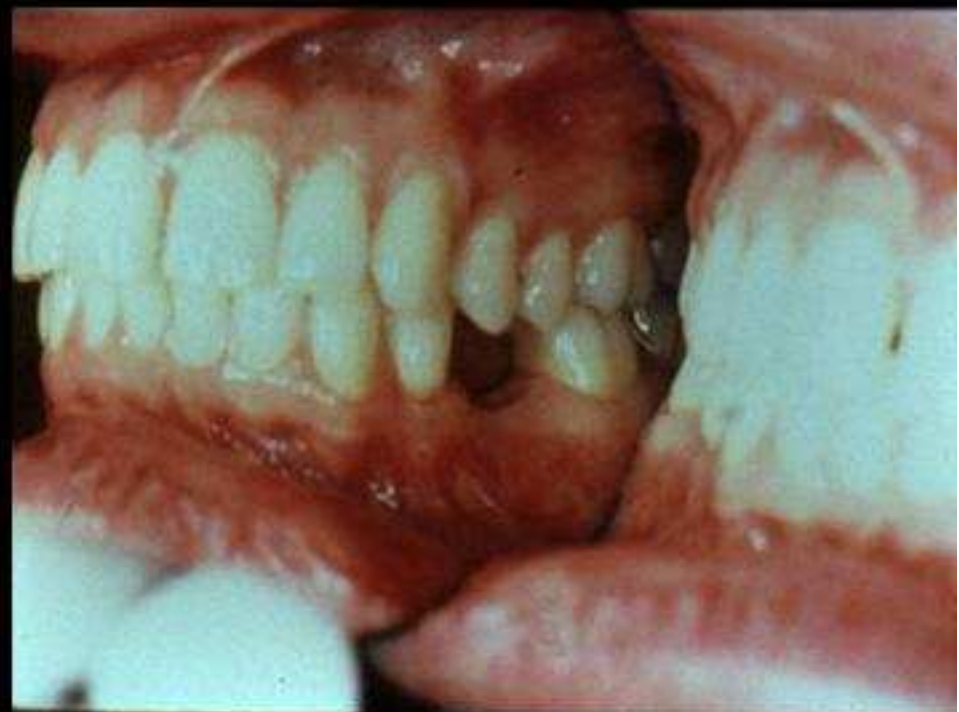


Partially Edentulous

Class I



Class I

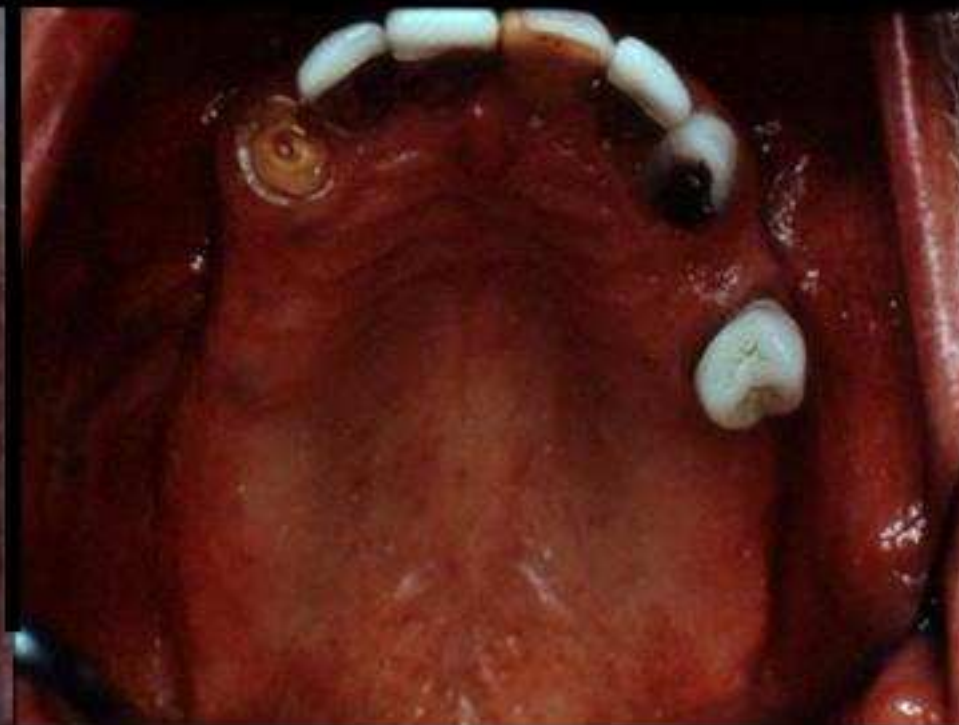


Partially Edentulous

Class II



Class III



Partially Edentulous

Class II



Class IV



Partially Edentulous

Class IV



Class IV



Partially Edentulous

Class IV



Class IV

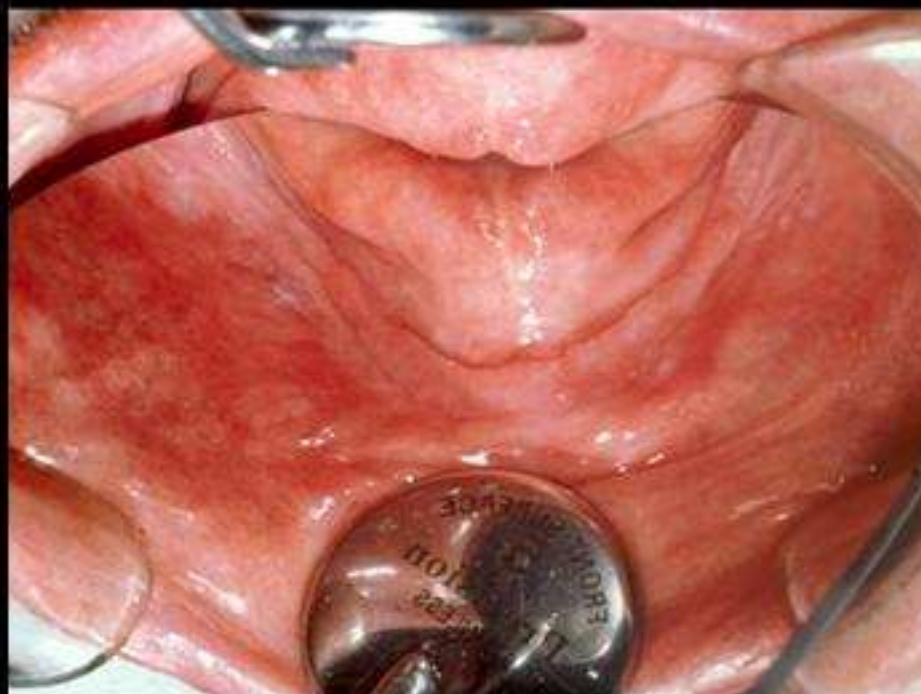


Completely Edentulous

Class I

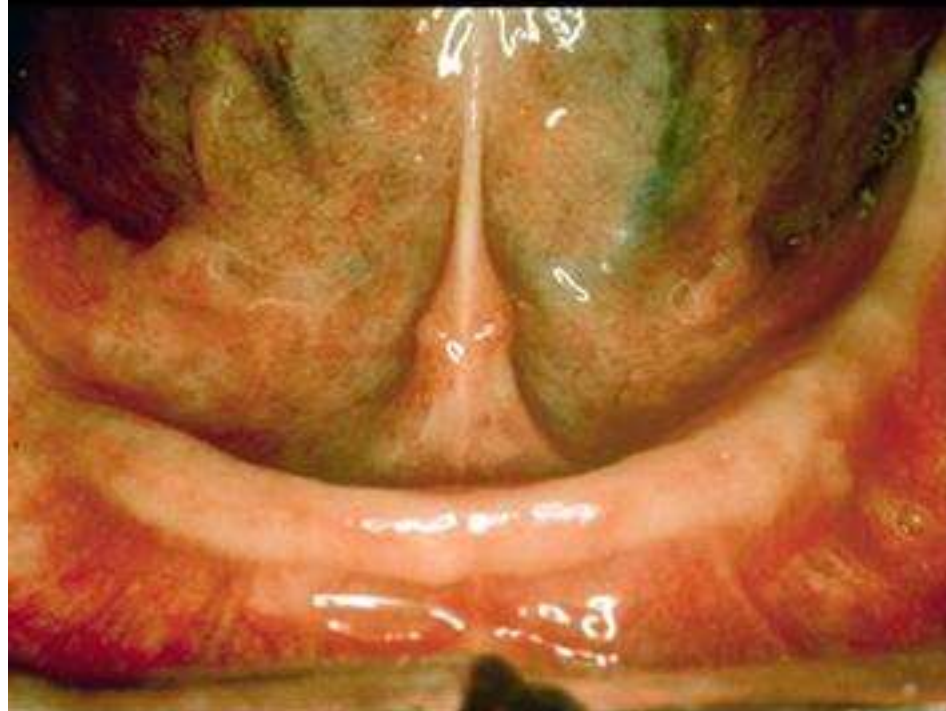


Class IV

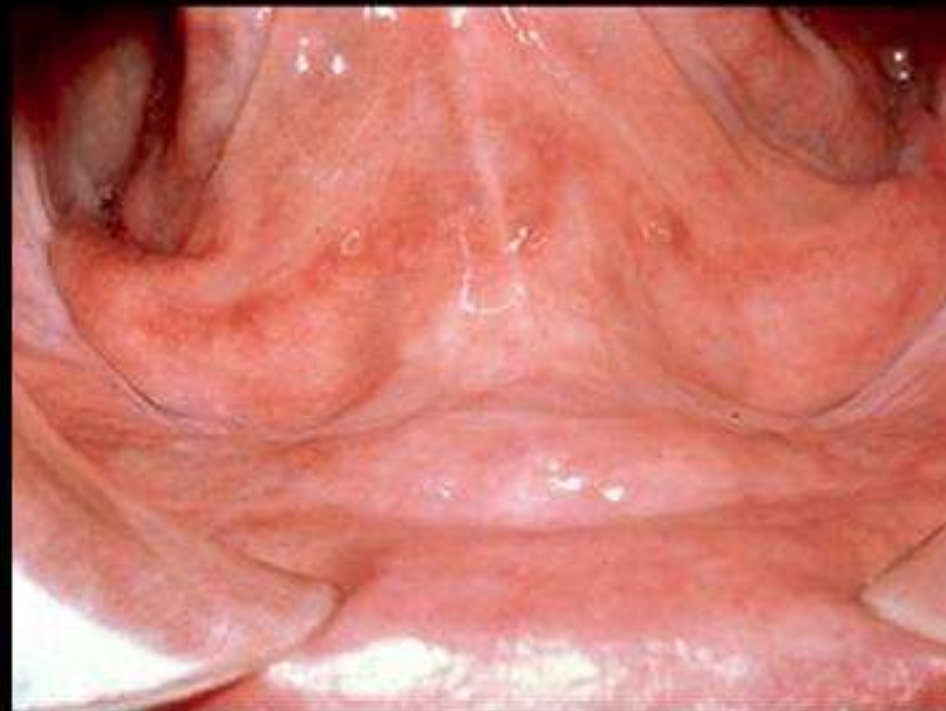


Completely Edentulous

Class I

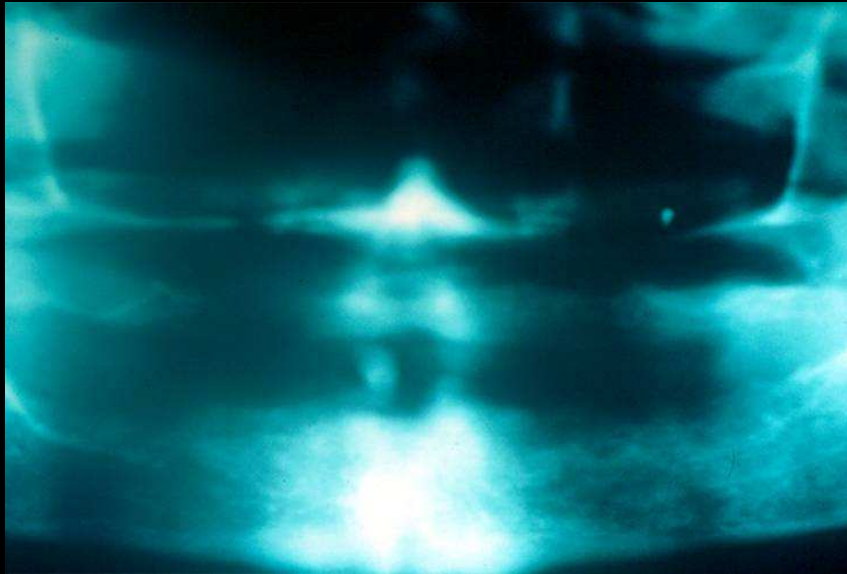


Class IV



Complete Edentulism

Type I



Residual bone height of 21mm or greater measured at the least vertical height of the mandible.

Type II



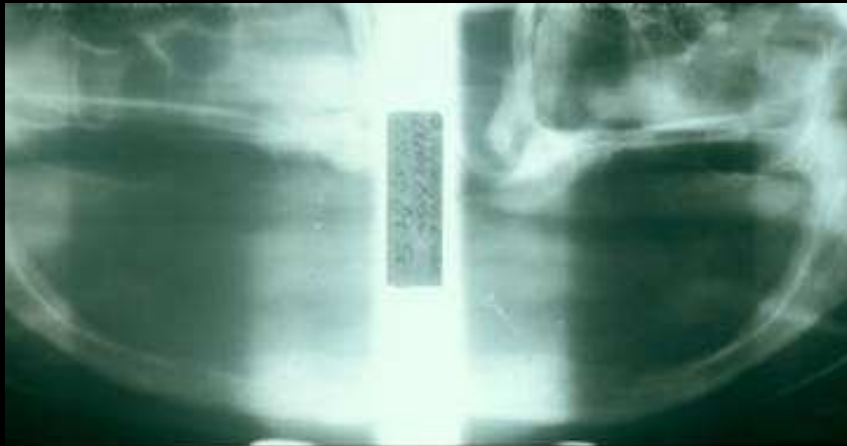
Residual bone height of 16-20 mm measured at the least vertical height of the mandible.

Type III



Residual alveolar
bone height of 11-15
mm measured at the
least vertical height of
the mandible

Type IV



Residual vertical bone height of 10 mm or less measured at the least vertical height of the mandible

